



Alpine Club of Canada

Edmonton Section

e-News – February 2009

Message from the Chair

What started out as a very promising ski season in the old year has become, to say the very least, interesting. January saw a big avalanche cycle, temperature inversions that led to +10°C temperatures in the alpine for days and strong winds everywhere. The word is that there is hardly any good skiing to be found above tree line anywhere in Western Canada. While skiing in the Kootenays a few weeks back we saw avalanche debris with uprooted mature pine trees in what were probably 100-year cycle events. It is an interesting winter indeed.

Soon I'm leading a section trip onto the Wapta and I am curious what there is to be found. I'm not very hopeful for epic skiing but a prediction for clear touring weather should make up for it.

The Section Board met the first Tuesday of February and voted on quite a few important motions. The new committee structure of the Board was adopted. The Board will now meet only four times a year and most

of the work will be done in small, dedicated committees. Most of these committees (except the Executive and the Climbing & Safety Committee) are open to all volunteers who want to contribute to the club and are interested in a specific topic. A scheme of the new structure is included in this newsletter.

According to the best records we currently have the Edmonton Section of the ACC was founded in 1912. In three years we will be having our centennial. We have also accumulated some funds in recent years and therefore struck a Centennial Projects Committee. Neil Bosch has kindly agreed to chair this committee. It will start immediately to plan for the celebration in three years time and also plan for a major legacy projects. Plenty of ideas for such a legacy projects from huts to an outdoor rock and ice climbing wall have already been thrown around. This is obviously a tremendous occasion and one that we hope to celebrate in grand style. Neil is starting to assemble the

committee and develop plans. Creative and energetic Edmonton Section members that would like to become involved in the centennial planning process are encouraged to join the Centennial Project Committee and should contact Neil at neilgoesup@gmail.com.

Professor Pearl-Ann Reichwein from the University of Alberta is at the same time looking into the history of the Edmonton Section. With her help we will be assembling a section library and also a historical resource located at the University of Alberta. Any members out there who have old CAJs, Gazettes or Newsletters from the section or the national or other historically relevant artifacts or stories should contact us. We would love to collect anything from the Section's history and hope to have, in time for the centennial celebration, a collection of stories and history.

The Board adopted two new policies that we hope will increase the level of safety on section trips. Attendance at the bi-annual trip leader orientations is now mandatory for all trip leaders. Also, we have adopted a policy of roping up when traveling on three

frequently traveled glacier areas in the Rockies. The exact wording of these new policies is included below. The adoption of these policies was not taken lightly but deemed necessary in the best interest of the club.

Personally I am opposed to any policy that tries to legislate common sense and judgment. If it were up to me all warning signs, guardrails and fences anywhere in the mountain parks should be removed. I would expect people to know that cliffs, water falls, glaciers and wild animals could be hazardous. Unfortunately my European-bred attitude seems to be at odds with the realities of our litigation-happy society and woefully out-of-date.

I hope to see many of you at the Sid Marty Dinner or somewhere in the mountains.

On behalf of the Edmonton Section Board

Ernst Bergmann

Chair

Edmonton Section, Alpine Club of Canada

Mark Your Calendar:

Tri-ice-athon in Nordegg,

Feb 28 and March 1, 2009

Ice climbers compete one day on 3 man made ice walls and then do "ice school" on the Sunday in the Cline River Gallery.

www.coe.ca/icefest

Canadian Birkebeiner 2009!

Saturday Feb 14th.

The ACC will once again be manning the Wanisan Station during the race. This station is at the 43.4 km mark on the 55km course.

Volunteers needed to help out at the food station. This is a fun day, come out and to cheer on the participants which include many ACCers! Volunteers receive a T-shirt and are invited to a post-Birkie party featuring refreshments and tons of draw prizes.

Volunteers please contact:

Terry McIntee

(h) 461-6830

terrymcintee@shaw.ca

General Meetings:

February 17, 2009 6:30 p.m. Old Timer's Cabin 9430 - 99th St

The Alpine Club of Canada (Edmonton Section) is pleased to present an evening of stories and music with Canadian writer, poet and singer

Sid Marty

In his latest work Marty explores our relationship with the great grizzly and describes the true events surrounding a series of frightening bear attacks in Banff in 1980. Marty has long been a singer / guitarist performing his original songs about western Canada at various venues and on radio.

"The Black Grizzly of Whiskey Creek is as good as nature writing gets." *Terry Glavin, Canadian Geographic*

Tickets: \$30.00 (Cash, Cheque or Visa) (Includes light dinner and bar refreshment)

For tickets please call 780.460.1000 Email: info@nabi.ca

2009 General Meeting Schedule

| Date | Speaker | Topic | Location |
|-------------------|----------------|----------------------|-------------------|
| January 20, 2009 | None | Garage Sale | Varscona on Whyte |
| February 17, 2009 | Sid Marty | The Black Grizzly of | Old Timer's Cabin |

| | | | |
|---------------------------|--|--|-------------------|
| | | <i>Whiskey Creek</i> | |
| March 17, 2009 | Emerson Sanford | <i>History of Rocky Mountain Trails: The Old Klyne's trail Jasper to Kootenay Plains</i> | Varscona on Whyte |
| April 21, 2009 | Leila Bahrami | <i>Mountaineering in the Middle East, Africa & Asia</i> | Varscona on Whyte |
| May 19, 2009 | Thirza Capenter | <i>Competition Rock Climbing</i> | Varscona on Whyte |
| September 15, 2009 | Section Members | <i>We know what you did last summer!</i> | Varscona on Whyte |
| October 20, 2009 | Rob Owen | <i>Alpine Mixed Climbing in the Canadian Rockies</i> | TBD |
| November 17, 2009 | Brad Harrison (to be confirmed) | <i>What's new in Avalanche Prevention and at the CAA</i> | Varscona on Whyte |

| | | | |
|-----------------------------|-----------------------|------------------|-------------------------------|
| Climbing Wall Nights | | | |
| February 8, 2009 | Urban Uprising | 6pm - 9pm | Members only! Free |
| February 22, 2009 | Urban Uprising | 6pm - 9pm | Members only! Free |
| March 8, 2009 | Urban Uprising | 6pm - 9pm | |

Leadership Courses:

For further information visit the website or email the leadership course coordinator, Mary Hurlburt, at mehurlb@telus.net

Avalanche Safety Training Level 2

Feb 13-16: There are still a few spots available.

The Avalanche Skills Training Level 2 Course will provide an intermediate level decision-making framework that is:

- Based on the most advanced knowledge available.
- Suitable for use by people with a moderate degree of training and experience.

Ice Climbing Leadership Course

March 7 and 8:

Waterfall Ice Leadership is for the intermediate level climber who is aspiring to become a leader and wishes to lead ACC Section Ice Climbing Trips. Course content will include a skills review, belay setups, rope management, placing protection on lead, rappel anchors, rappel/lowering station management and managing groups in winter. The first day will be, primarily, skills training while the second day will normally include a multi-pitch climb led by the participants under supervision.

ACC Rock Solid Leadership Course:

June 29-July 5, 2009

ACC Rock Solid Leadership is a seven-day course during which a number of hard and soft skills sessions related to leading club trips to rock climbing venues are presented. It is not a course about leading hard rock climbs but rather a course to introduce you to leading others on rock climbs of almost any grade. Instruction takes place in the Front Ranges of Jasper Park.

Price: \$1650 (discount for active section leaders)

New Section Policies for Trip Leaders:

1. All active ACC Edmonton Section Trip leaders in good standing must attend the trip leader orientation (offered twice a year in April in November) at least once every two years. The privilege of leading trips for the Edmonton section can be revoked if a trip leader does not attend the orientation. Currently active trip leaders have until November 2010 to attend a first orientation.

2. Traveling on Glaciers:

Safety should be paramount, if in doubt rope up.

- *It is often not much slower to be roped on the way up. This allows getting to know the terrain and snow pack and makes it easier to manage the group.*
- *The Edmonton Section Board has decided on the following policy that applies to all Edmonton Section trips:*

*Skiing and mountaineering groups on trips of the Edmonton Section of the Alpine Club of Canada **will always** be roped up in the following locations if the glaciers there are at all snow-covered:*

- *Ascending or descending the Athabasca Glacier access to the Columbia Icefield from the toe of the glacier to the top of the third icefall. (Note that for all but advanced groups access to the Columbia Icefield via the Saskatchewan Glacier is recommended).*
- *Accessing Peyto Hut from the Peyto Glacier from the toe of the Peyto Glacier to the edge of the glacier below the hut when circling the icefall below the hut.*
- *Crossing over Balfour High Col from the edge of the glacier closest to Balfour Hut to the height of Balfour High Col where the entire route to the Scott Duncan Hut would be visible.*

This is a section policy and not subject to the discretion of the trip leader, unless the leader is an ACMG-certified mountain guide!

Edmonton Section Summer Camp 2009

Aug. 16-23

Little Yoho Valley

This year's camp will be held in Yoho National Park near Field B.C. the camp will be twenty-one persons at the Stanley Mitchell Hut belonging to the ACC <http://www.alpineclubofcanada.ca/facility/stanley.html>. The main activity in this area is hiking and beginner to intermediate scrambling. There are two mountaineering objectives the Presidents and Isolated Peak both are glacier approaches. The camp is being organized and run by volunteers. There will be no professional guides. There will be a camp manager who will co-ordinate activities at the camp but will not act as an instructor or guide. Participants will form their own groups and appoint a leader for each day's activities. Participants will be expected to sign up on the duty roster to share in camp chores such as help cooking, cleaning, water hauling, garbage disposal, and other duties.

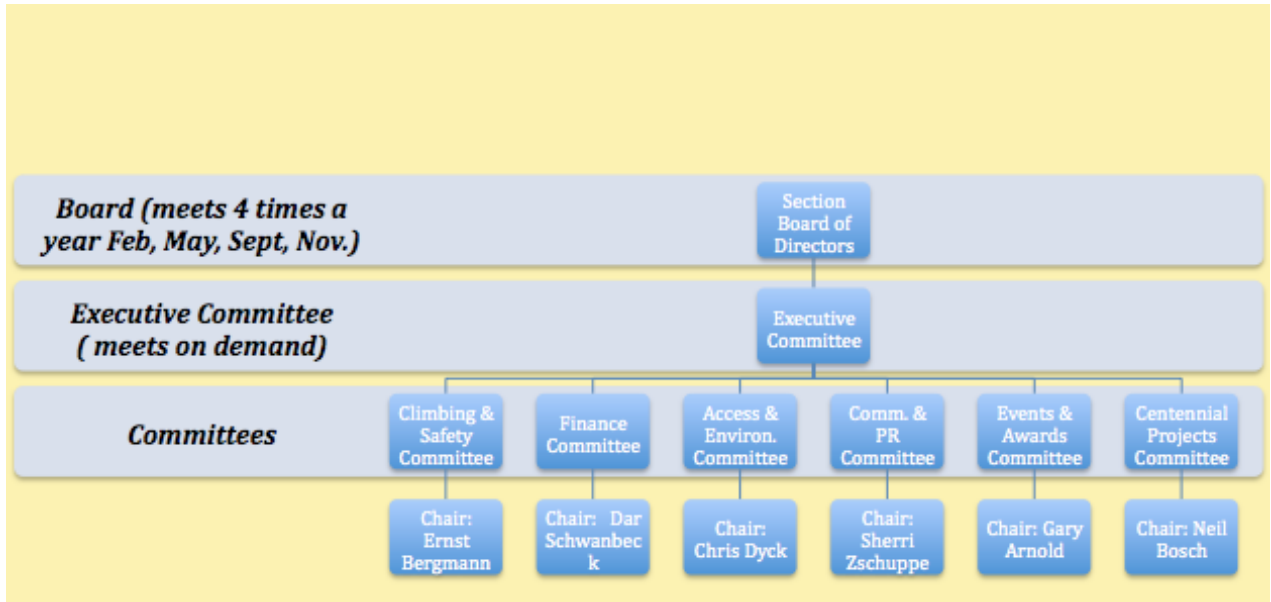
For further information and to secure a place; (For reservations, which I will keep for 10 days until your cheque arrives. Please make cheque payable to "Edmonton Section of the ACC" and mail to me. I will keep your cheque on file till June 15 when I will deposit them all. So please date your cheque for June 15).

John Booth, 1111 Lakewood Rd. NW, Edmonton, AB. T6K-3A9

Ph. H.780-462-8014 or C.780-446-0938

john.booth@telus.com or dlimbooth@telus.net

ACC Edmonton Section Governance Structure



The *Winter Trip Schedules* are here:

<http://www.alpineclubedm.org/tripSchedules.asp#CurrentTripScheduleWinter>

Please also read the *Note to Participants*:

<http://www.alpineclub-edm.org/note.asp>

The *Leadership Course Schedule* is here:

<http://alpineclub-edm.org/coursesLeadership.asp>